

Professional English

Advanced Programme for the Use of English
in Professional Environments



Professional English is both a language and culture programme



The programme is designed:

- to offer an opportunity for participants to refresh and further improve their language skills. The Professional English Programme uses lectures from specialists in diverse subjects as a framework for discussions, presentations and further individual and group research.
- to provide an insight into contemporary developments both within the United Kingdom and in the country's changing relationship with the rest of the world. We consider how these trends are reflected in the evolving use of the English language.
- to focus on the use of the formal language as used, for example, in lectures, seminars, academic writing and meetings. Consideration is also given into how regional and informal styles serve to shape contemporary communications. Whilst we focus on developments in British English, comparisons are made with American and other variants when appropriate.
- to address specific issues such as oral or aural difficulties, weaknesses in formal written communication etc.
- to provide participants with the opportunity to actively practise their English across a range of skills, and to use this opportunity to further develop any area(s) of specific interest.

Maximum class sizes are limited to 20 with some smaller group sessions. Participants will also have access to our Language Learning Centre facilities and individual sessions with our Language Learning Advisers.

Who is this programme intended for?

This programme is intended for individuals who already have a relatively good command of English, but who wish to up-date or further refine their language.

The programme will be of special interest to individuals working in educational, administrative and business environments who require increasing accuracy or fluency in English, or who require further exposure to varieties of English to satisfy their professional needs.

Participants are expected to be able to work at a minimum of IELTS 6.5 / 7* (B1/B2 CEF inter-face) from the start of the course.

We do not pre-test, but if you have any doubts about your level please do contact the Programme Leader (c.mcpherson@hull.ac.uk) before enrolling.

Content

The programme consists of:

- a series of lectures by subject specialists,
- seminar discussions and extended work based on the lectures and other materials,
- daily reviews of national and international news, and the identification and consideration of the utilisation of associated vocabulary,
- individual and group work including participant-focused projects and presentation / lectures.

Class contact will be c. 20 hours per week. Participants will be expected to undertake considerable, additional work outside of class.

Duration

Professional English can be taken on a one, two or three week basis.

Start dates

Week One

Monday June 24th – Friday June 28th

Week Two

Monday July 1st – Friday July 5th

Week Three

Monday July 8th – Friday July 12th

It is hoped that participants will be at the University by 09.15 on the Monday morning so that we can complete administrative procedures and start lectures punctually.

Fees

The tuition fee for each week is £250. This does not include accommodation, food etc. For information on accommodation, please contact rooms@hull.ac.uk

Certification

Participants will be awarded a certificate of attendance, with a commentary on areas in which they have demonstrated particular skills. Suggestions will be made as to skills which would benefit from further focus.

For quality purposes, we will not issue certificates to participants who attend for less than two weeks, or whose attendance is less than 80% of the available contact time.

Free time

We expect participants to fully engage in the programme and complete all work set. However, we also want the programme to be a pleasurable experience. Consequently, the programme is structured to allow you free time at the weekends and some evenings.

The Lake District, Scotland and Wales are easily accessible for weekend trips from the city of Kingston upon Hull. Hull lies on the north bank of the River Humber and offers ready access to both the ancient cities of York and Lincoln, and the beautiful Yorkshire Wolds and Dales.

If you are thinking of coming with your partner / family, we can provide a list suggesting places to see and things to do. Please contact the Programme Leader for further information.

Transport

By train, Hull is approximately 2.5 hours from London, 1.35 hours from Manchester and 40 minutes from Leeds. The airports of London Stansted, Humberside, Doncaster, Leeds-Bradford, Manchester and East Midlands are all readily accessible. There are daily ferry services from Rotterdam and Zeebrugge to Hull.

To apply

For information concerning the application procedure or further information, please email languages@hull.ac.uk

The Programme Leader

Campbell McPherson is responsible for this programme.

Email:

languages@hull.ac.uk

Telephone:

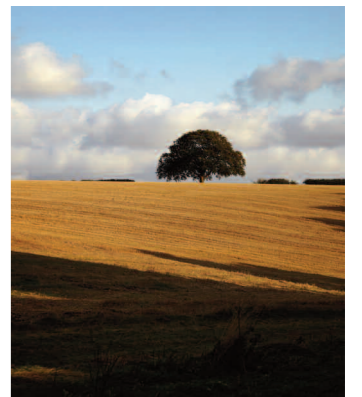
0044 (0)1482 465839
Campbell McPherson

0044 (0)1482 465345

Helen Williams
(Programme Administrator)



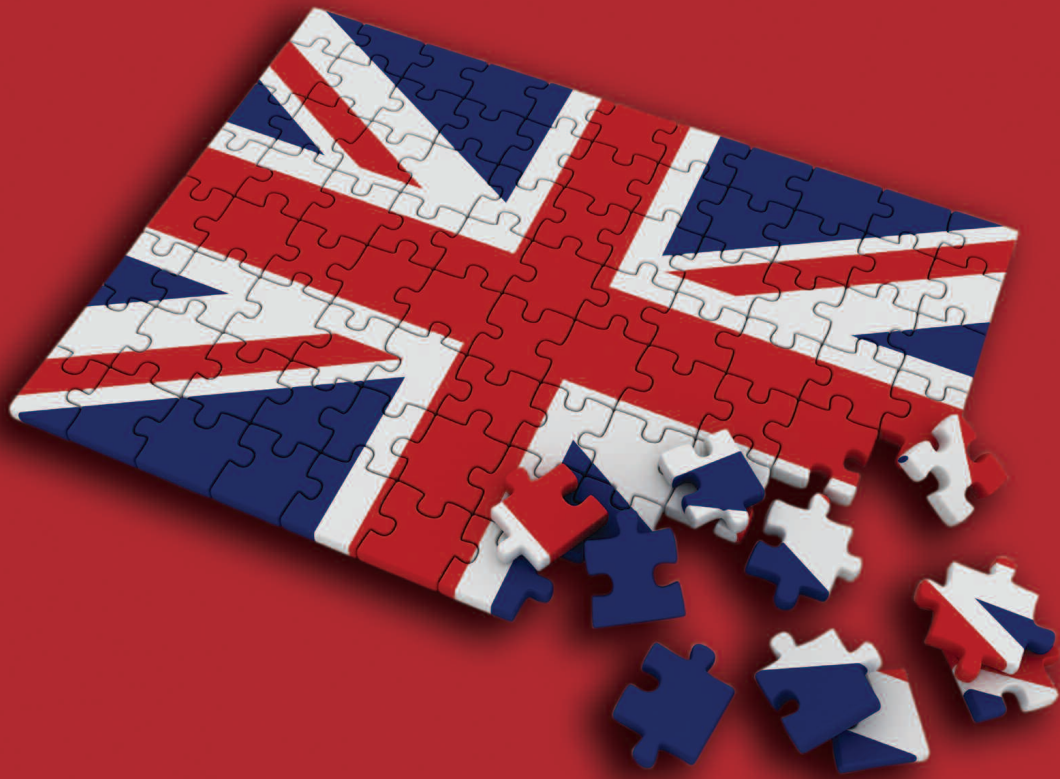
The Venn Building, Hull Campus



The Wolds



Scarborough Campus



**Helping to fit everything together - improving your English
by adding to your knowledge of the language and culture.**

languages@hull.ac.uk

University of Hull
Cottingham Road
Hull, HU6 7RX, UK