

國立陽明交通大學

NATIONAL YANG MING CHIAO TUNG UNIVERSITY

AY2021/2022



**Exchange Program Guideline**

Office of International Affairs



# Office of International Affairs (OIA)



## Contact Information

### Outbound Exchange Program (NYCU students to your university)

- Ms. Cherrie Chow (Chiaotung Campus)
- [cherrie@nycu.edu.tw](mailto:cherrie@nycu.edu.tw)

### Inbound Exchange Program (Students from your university to NYCU)

- Ms. Lily Cheng (Chiaotung Campus)
- [lilycheng@nycu.edu.tw](mailto:lilycheng@nycu.edu.tw)

### Inbound & Outbound Exchange Program

- Ms. Ina Huang (Yangming Campus)
- [yyyhuang@nycu.edu.tw](mailto:yyyhuang@nycu.edu.tw)

### Inbound Exchange Student Services

- Ms. Iris Chuang (Chiaotung Campus)
- [irischuang@nycu.edu.tw](mailto:irischuang@nycu.edu.tw)
  
- Ms. Meggy Niu (Yangming Campus)
- [meggyniu@nycu.edu.tw](mailto:meggyniu@nycu.edu.tw)





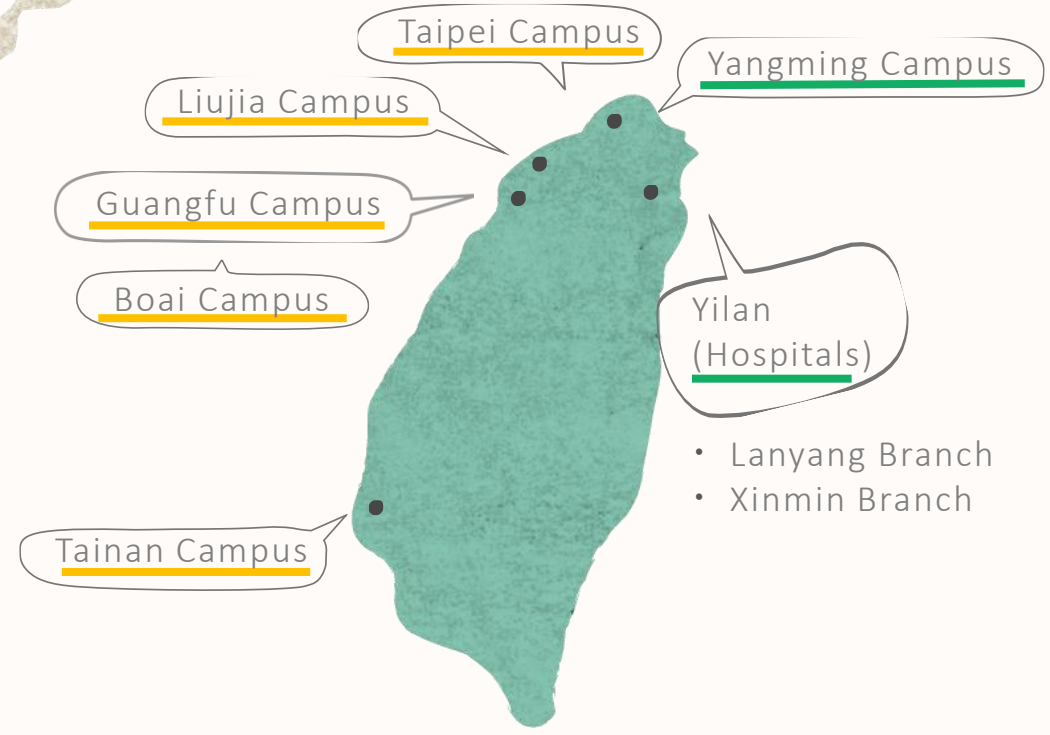
# Facts about NYCU





# Campus Map

● Chiaotung Campus   ● Yangming Campus



# NYCU at a Glance

## Key Figures and Rankings

### Rankings (By subjects)

#117 Engineering - Electrical & Electronic

#129 Computer Science & Information Systems

#139 Engineering & Technology

#101-150 Nursing

#151-200 Medicine

### Chiaotung Campus

 Students  
**15,182**

**5,905** Undergraduates  
**9,277** Graduates

 Faculty  
**1,172**

(Largest number of IEEE fellows in Taiwan)

### Yangming Campus

 Students  
**4,851**

**2,209** Undergraduates  
**2,642** Graduates

 Faculty  
**1,884**

# 19 Colleges

- Guangfu Campus
- Yangming Campus
- Other Campuses

Computer Science



Electrical & Computer Engineering



Engineering



International Semiconductor Technology



Law



Science

Artificial Intelligence  
(Tainan Campus)



Biological Science & Technology  
(Boai Campus)



Hakka Studies  
(Liuja Campus)



Management  
(Guangfu & Taipei Campus)



Photonics  
(Tainan Campus)

Humanities & Social Sciences

Biomedical Science & Engineering



Dentistry



Life Sciences



Medicine



Nursing



Pharmaceutical Sciences



# Inbound Exchange Program







# Introduction

Types	Remarks	How to apply
Inbound Exchange Program	Students enrolled (or matriculated) at partner institutions and nominated by coordinators of home institutions.	The nomination link will be email to partner institutions' coordinator in every nomination period. The link is different in each semester.
Inbound Visiting Program ( <b>fee-paying</b> exchange)	Students enrolled at partner institutions but not officially nominated by home institution; or, students from non-partner institutions.	Students apply directly via the online application system in the application period. 

# Important Dates

## Application timeline

Students may choose to exchange for one semester or one academic year.

\*Academic year at NYCU begins in September; full academic year exchange can only begin in Fall Semester.

Semester	Nomination Deadline	Application Deadline
Fall Semester (Sep. to Jan.)	March 30 <sup>th</sup>	April 15 <sup>th</sup>
Spring Semester (Feb. to Jun.)	September 30 <sup>th</sup>	October 15 <sup>th</sup>

\*The confirmed academic calendar will be announced around late June each year.

# NYCUCourse Timetable

<b>Instruction</b>	1.	Website: <a href="https://timetable.nycu.edu.tw/">https://timetable.nycu.edu.tw/</a>
	2.	Choose English in “Language”, and the system will switch to English version.
	3.	Choose “College” in “Search for Department” and search for the program under the college you choose.
	4.	Tick the box in front of “Other Search Parameters” and click on “English Medium Courses”.
	5.	The course timetable will be finalized about two months before the start of each semester. Students could refer to the timetable of the previous semesters during application period.





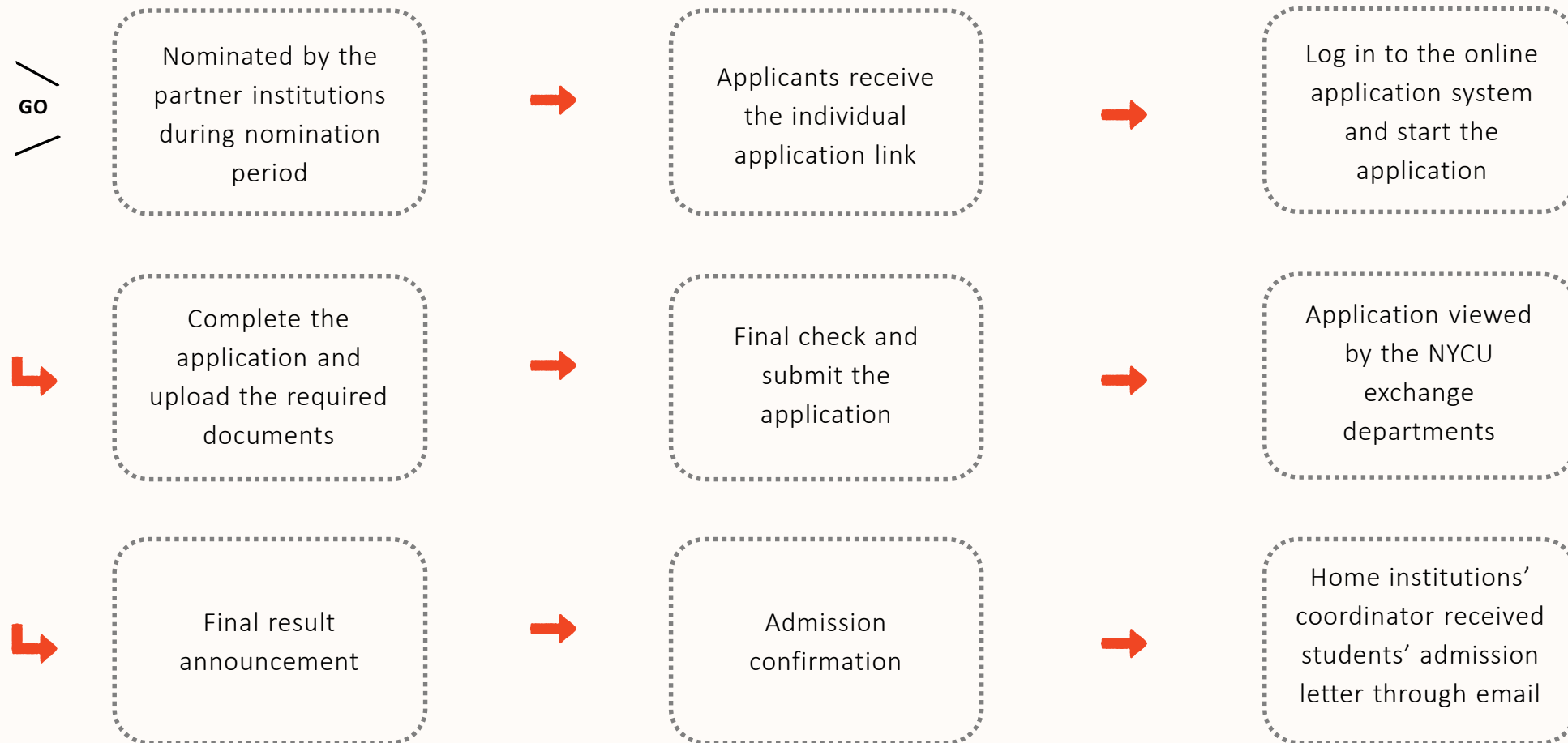
# NYCU Departmental Application Requirements

**\*\*Please read the requirements carefully in the below link before applying.**

<https://drive.google.com/file/d/122j-Fur8Ja4MsdoKv9ec07HeHGr2Qqbj/view?usp=sharing>

1. The department would review the applications and the supporting documents; each department reserves the right to reject or re-allocate applicants to appropriate department.
2. Minimum credit requirement (per semester)  
**Undergraduate: 9 credits**  
**Graduate: at least 2 academic courses**  
(Please check with home institution for credit transferability)
3. **Students are able to choose courses across departments or colleges (not limited to the enrolled department/college only).**  
Please be aware that some professors may require the students to own basic knowledge about the course.
4. Some popular courses are very competitive and exchange students may not be able to get in. It is suggested students to be more flexible about course choice.
5. **College of Management** is limited to “Final-year undergraduate students or graduate students” . Most English-taught courses are offered in graduate level.

# Application Procedures



# Application Documents

## 8 Documents

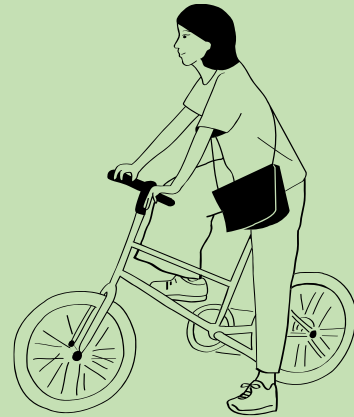
Please prepare the following documents and submit to the online application system. All the documents should be PDF format and in English.

NO.	Documents	Remarks
1	Application form	Both applicant and home institution' s coordinator have to sign on the application form.
2	Curriculum vitae (CV)	Your personal resume in English.
3	Study Plan	It may include your motivation and a tentative list of courses you would like to take during the exchange period.
4	Official transcript	The transcript that is approved by the home institution and is in English.
5	Official enrolment letter	The enrolment letter from the home institution or "valid" student card.
6	Passport (Information page)	It should have at least 6 months of validity.
7	*Supporting document (optional)	E.g. proof of language proficiency, certificate of awards or competitions, etc.
8	*Recommendation letter (optional)	The letter from the home institution' s coordinators or professors.





# Student Services



Division of Overseas Student Affairs is part of the Office of International Affairs, and is established to offer on-site services, such as accommodation, insurance, visa, registration and other student needs. Furthermore, International student society, host-family arrangement, and international student emergency are taken care of by them as well.





## Orientation

The orientation will be held at the beginning of each academic semester. It will introduce NYCU to new international students and covers important and helpful topics.



## Free Chinese Courses

- One-on-one tutoring
- Chinese Cultural Salon: Cultural experience courses
- Courses range from introductory to advanced levels (4 levels)
- Elective courses focusing on useful situational conversations



NYCU Chinese Language Program, LTRC

National Yang Ming Chiao Tung University



國立陽明交通大學 國際事務處

Office of International Affairs, NYCUC